

# ideapad 520

## INTELLIGENT. PREMIUM. SIMPLE.

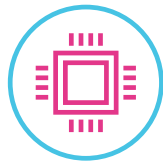
Meet the Lenovo™ IdeaPad™ 520. Featuring top-of-the-line processing and advanced graphics options, this 15" laptop is designed to impress. A step-up from the Lenovo IdeaPad 320, the Lenovo IdeaPad 520 is finished in premium metal and offers Harman® Speakers optimized with Dolby Audio™. A blend of style and substance, just like you.

### WHY YOU SHOULD BUY THE LENOVO IDEAPAD 520



#### Designed with precision

The IdeaPad 520 features a redesigned chassis with angled edges and metal surfaces, for a contemporary take on classic style. Available in three sophisticated tone-on-tone options with a soft-touch finish: Iron Grey, Champagne Gold, or Bronze. We also redesigned the touchpad, for a better user experience with multi-finger gestures. Touch, click and zoom—you'll feel the difference.



#### Power and speed

The IdeaPad 520 features top-of-the-line 7<sup>th</sup> Generation Intel® Core™ i7 processing and up to 16 GB memory, for lightning-fast responsiveness. Multi-task with ease—you'll be able to transition seamlessly between web tabs, and run multiple programs without being slowed down.



Lenovo™



#### Advanced graphics performance

The IdeaPad 520 offers advanced graphics performance, with up to NVIDIA® GeForce® 940MX. A dedicated graphics card relies on its own processor, accelerating graphics performance by more than 3 times. Play games, edit video and more—with reduced screen tearing and advanced photo and video-editing performance.



#### Stunning FHD clarity

The IdeaPad 520 offers up to Full High-Definition resolution, with wide-angle IPS anti-glare technology. Whether you're lounging on the couch or want to watch with a friend, you'll get the absolute most of your entertainment from any angle.



[WWW.LENOVO.COM](http://WWW.LENOVO.COM)



# ideapad 520

## SPECIFICATIONS

Lenovo IdeaPad 520-15IKB\*

### PERFORMANCE

#### Processor

7<sup>th</sup> Generation Intel® Core™ i7 Processor

#### Operating System

Windows 10 Home

#### Graphics

Intel® HD Graphics  
NVIDIA® GeForce® 940MX

#### Camera & Microphone

HD with Array Microphone

#### Memory

4 GB DDR4  
4 GB DDR4 + 2 GB Slot  
4 GB DDR4 + 4 GB Slot  
4 GB DDR4 + 8 GB Slot  
16 GB Slot

#### Storage

128 GB SATA SSD  
256 GB SATA SSD  
512 GB SATA SSD  
500 GB SATA HDD  
1 TB SATA HDD  
2 TB SATA HDD  
128 GB PCIe SSD + 1 TB SATA HDD + ODD  
16 GB Intel® Optane™ SSD +  
1 TB SATA HDD + ODD  
128 GB SATA SSD + 1 TB SATA HDD  
256 GB SATA SSD + 1 TB SATA HDD

#### Audio

2 x 2W Harman® Speakers with Dolby Audio™

#### Battery<sup>1</sup>

Up to 5 Hours with premium 35Wh battery

### DESIGN

#### Display

15.6" HD (1366 x 768) Anti-Glare  
15.6" FHD (1920 x 1080) IPS Anti-Glare

#### Dimensions (W x D x H)

(mm) : 378 x 260 x 22  
(inches) : 14.88" x 10.23" x 0.87"

#### Weight

Starting at 4.8 lbs (2.2 kg)

#### Additional Feature

Fingerprint Reader<sup>2</sup>  
Backlit Keyboard<sup>2</sup>

#### Tone-on-Tone Color Options

Iron Grey  
Champagne Gold  
Bronze

### CONNECTIVITY

#### WLAN

1 x 1 WiFi 802.11 ac<sup>3</sup>  
2 x 2 WiFi 802.11 ac<sup>3</sup>

#### Bluetooth®

Bluetooth® 4.1

#### I/O (Input/Output) Ports

2 x USB 3.0  
1 x USB 3.0 Type-C™  
HDMI™  
4-in-1 Card Reader  
RJ45 LAN  
Audio Jack

### PRELOADED SOFTWARE

- Lenovo App Explorer
- Lenovo Companion 3.0
- Lenovo ID
- Lenovo Settings
- McAfee LiveSafe™ (30-day trial)
- Microsoft Office 365 (30-day trial)



<sup>1</sup> All battery life claims are approximate and based on test results using the MobileMark® 2014 ver 1.5 battery life benchmark test. Actual results will vary, and depend on numerous factors including product configuration and usage, software, operating conditions, wireless functionality, power management settings, screen brightness and other factors. The maximum capacity of the battery will naturally decrease with time and usage. See <https://bapcocom/products/mobilemark-2014/> for additional details.

<sup>2</sup> Optional.

<sup>3</sup> Disable ac for Russia, Ukraine, Indonesia and Egypt.

## LENOVO SERVICES

#### Warranty Extensions<sup>1</sup>

This fixed-term, fixed-cost service helps accurately budget for PC expenses and protect your investment.

#### Warranty Upgrade to Onsite Service Repair<sup>2</sup>

Maximizes PC uptime and productivity by providing Convenient, fast repair service at your place.

#### Accidental Damage Protection<sup>3</sup>

Coverage for non-warranted damage incurred under normal operating

conditions, such as spills, drops or damage to the integrated screen.

#### Lenovo Services Premium Support<sup>3</sup>

One-stop solution for non-warranty challenges with network, security and software setup, performance tune-up and more.

<sup>1</sup> Up to 3 years total duration  
<sup>2</sup> May not be available in all countries  
<sup>3</sup> Available in Austria, Germany, Ireland, Switzerland and UK

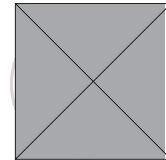
## OPTIONS & ACCESSORIES



Lenovo 500  
Wireless  
Mouse



Lenovo 500  
2.0 Bluetooth®  
Speaker



Lenovo 15.6"  
NAVA On-trend  
Toploader

\* Example of Lenovo IdeaPad catalogue naming convention



#### Intel® platform codes

Haswell: IHW, Broadwell: IBD, BroadWell U: IBU, Skylake: ISK, Skylake U: ISU, KabyLake: IKB, Cannonlake: ICN, Baytrail: IBY, Braswell: IBR, Cherrytrail: ICR, Apollolake: IAP, GeminiLake: IGM



WWW.LENOVO.COM

Lenovo reserves the right to alter product offerings and specifications at any time, without notice. Lenovo makes every effort to ensure accuracy of all information but is not liable or responsible for any editorial, photographic or typographic errors. All images are for illustration purposes only. For full Lenovo product, service and warranty specifications visit [www.lenovo.com](http://www.lenovo.com). Lenovo makes no representations or warranties regarding third party products or services. **Trademarks:** The following are trademarks or registered trademarks of Lenovo: Lenovo, the Lenovo logo, ideapad, IdeaCentre, yoga and yoga home, Microsoft, Windows and Vista are registered trademarks of Microsoft Corporation. Ultrabook, Celeron, Celeron Inside, Core Inside, Intel, Intel Logo, Intel Atom, Intel Atom Inside, Intel Core, Intel Inside, Intel Inside Logo, Intel vPro, Itanium, Itanium Inside, Pentium, Pentium Inside, vPro Inside, Xeon, Xeon Phi, and Xeon Inside are trademarks of Intel Corporation in the U.S. and/or other countries. Other company, product and service names may be trademarks or service marks of others. Visit [www.lenovo.com/lenovo/us/en/safecomp/](http://www.lenovo.com/lenovo/us/en/safecomp/) periodically for the latest information on safe and effective computing. ©2017 Lenovo. All rights reserved.



Lenovo™