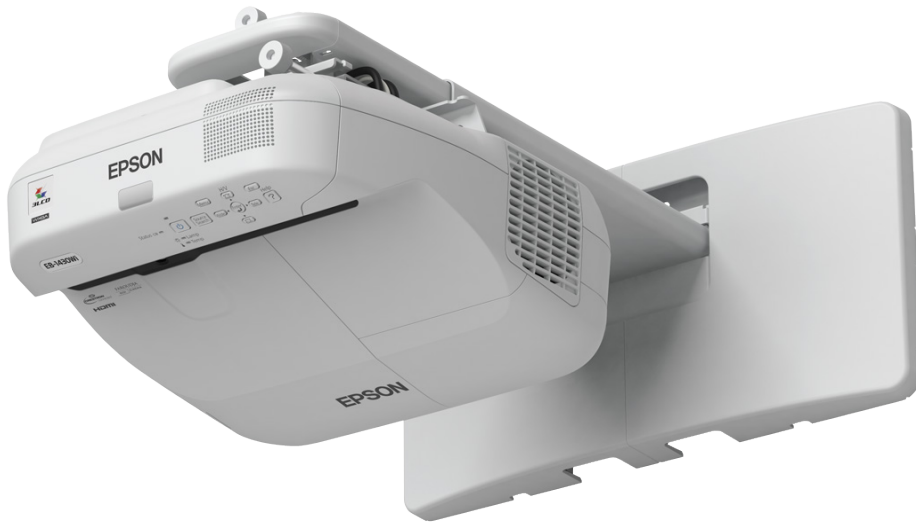


# EB-1430Wi



## DATASHEET



This interactive, ultra-short-throw, business projector is ideal for inspiring collaboration and transforming any meeting room.

Bring interactivity to any meeting room with Epson's new ultra-short-throw projector, featuring finger-touch and dual pen capability, a high brightness level of 3,300 lumens and WXGA resolution that matches the resolution and aspect ratio of most laptop displays. The EB-1430Wi's ultra-short-throw design allows you to present large images from a very short distance with minimised shadows and glare.

### Quality image

Epson's 3LCD technology ensures high-quality images with equally high White and Colour Light Output for vivid colours and bright images, even in daylight, and three times brighter colours than leading competitor products<sup>1</sup>. HDMI inputs mean that meeting participants benefit from sharp, clear projected images. With up to a 100-inch screen-size, a multi-source video conference and presentation can be displayed in split-screen, without compromising on image size.

### Finger-touch and dual pen

Use your fingers to annotate directly onto the screen. Epson's interactive pens are now even more responsive and easy to use. With the new dual pens, colleagues can work simultaneously using different pen attributes.

### More control and collaboration

This interactive meeting room system combines the roles of ultra-short-throw projectors, interactive whiteboards and paper flipcharts in one multi-purpose, integrated product. The new whiteboard sharing mode allows meeting participants to view and annotate whiteboard content from a range of smart devices, without the need for any special application.

## KEY FEATURES

- **Quality image**  
Epson's 3LCD technology ensures high-quality images
- **Finger-touch and dual pen**  
Use your fingers to annotate directly onto the screen
- **Built for business**  
Share content from a range of devices simultaneously
- **Split-screen**  
View presentations and a video conference at the same time



**EPSON**<sup>®</sup>  
EXCEED YOUR VISION

## PRODUCT SPECIFICATIONS

### TECHNOLOGY

Projection System	3LCD Technology
LCD Panel	0.59 inch with MLA (D8)

### IMAGE

Colour Light Output	3,300 lumen- 1,900 lumen (economy)
White Light Output	3,300 lumen - 1,900 lumen (economy) In accordance with ISO 21118:2012
Resolution	WXGA, 1280 x 800, 16:10
Contrast Ratio	10,000 : 1
Lamp	245 W, 4,000 h durability, 6,000 h durability (economy mode)
Keystone Correction	Manual vertical: $\pm 3^\circ$ , Manual horizontal $\pm 3^\circ$
High Definition	HD ready
Aspect Ratio	16:10
Colour Processing	10 Bits
2D Vertical Refresh Rate	50 Hz - 85 Hz

### OPTICAL

Projection Ratio	0.27:1
Zoom	Digital, Factor: 1 - 1.35
Image Size	60 inches - 100 inches
Projection Distance Wide	0.4 m ( 60 inch screen)
Projection Distance Tele	0.6 m ( 100 inch screen)
Projection Lens F Number	1.8
Focal Distance	3.71 mm
Focus	Manual
Offset	6 : 1
Lens	Optical

### CONNECTIVITY

USB Display Function	4 in 1: Image / Mouse / Sound / Interactivity
Interfaces	USB 2.0 Type B, HDMI in (2x), Stereo mini jack audio in (3x), VGA out, USB 2.0 Type A, Stereo mini jack audio out, VGA in, Microphone input, Ethernet interface (100 Base-TX / 10 Base-T), MHL, RS-232C, S-Video in, Finger-touch interface, Sync. in, Sync. out
Epson iProjection App	Ad-Hoc / Infrastructure

### ADVANCED FEATURES

Security	Kensington lock, Security bar, Password protection
Features	Auto Calibration, Auto brightness adjustment, Automatic input selection, Built-in speaker, Customizable user logo, Digital zoom, Direct Power on/off, Document Camera Compatible, Driverless installation, Dual Pen Support, Dynamic lamp control, Easy OSD pre-setting, Finger-touch support, Interactive, PC free annotation, Split-Screen-Function
Interactivity	Yes - pen and finger-touch
Video Colour Modes	Dynamic, Presentation, Sports, sRGB, Theatre, Whiteboard, Customized

### GENERAL

Energy Use	365 W, 274 W (economy), 0.42 W (standby)
Product dimensions	367 x 375 x 155 mm (Width x Depth x Height)
Product weight	5.7 kg
Noise Level	Normal: 35 dB (A) - Economy: 28 dB (A)
Included Software	Easy Interactive Tools, EasyMP Network Monitor, EasyMP Multi PC Projection, EasyMP Network Projection
Loudspeaker	16 W
Supply Voltage	AC 220 V - 240 V, 50 Hz - 60 Hz

### OTHER

Warranty	36 months On-site service, Lamp: 12 months or 1,000 h Optional warranty extension available
----------	--

## EB-1430Wi

### WHAT'S IN THE BOX

- USB cable
- Pen case
- Remote control incl. batteries
- Main unit
- Wall mounting bracket
- Power cable
- Interactive pens
- CD Manual
- Finger touch unit
- Control pad

## OPTIONAL ACCESSORIES

- Air Filter - ELPAF40  
V13H134A40
- Lamp - ELPLP80  
V13H010L80
- Control and Connection Box - ELPCB02  
V12H614040DA
- Ceiling Mount (White) - ELPMB23  
V12H003B23
- Ceiling Pipe (450mm) - ELPPF13  
V12H003P13
- Ceiling Pipe (700mm) - ELPPF14  
V12H003P14
- Interactive Pen - ELPPN04A  
V12H666010
- Interactive Pen - ELPPN04B  
V12H667010
- Quick Wireless Connect USB key - ELPAP09  
V12H005M09

EB-1430Wi

## LOGISTICS INFORMATION

SKU	V11H665041
EAN code	8715946536842
Dimensions Single Carton	762 x 432 x 324 mm
Carton Weight	12.9 Kg
Multiple Order Quantity	1 Units
Country of Origin	China
Pallet Size Euro	6 Units
Pallet Size Block	24 Units

For more information please contact:

Telephone: 01952 607111 (UK)+  
01 436 7742 (Republic of Ireland)  
E-mail: [enquiries@epson.co.uk](mailto:enquiries@epson.co.uk)  
Chat: [etalk.epson-europe.com](https://etalk.epson-europe.com)  
Fax: 0871 222 6740  
+ Local call rate.

Web: [www.epson.co.uk](http://www.epson.co.uk)  
[www.epson.ie](http://www.epson.ie)

Trademarks and registered trademarks are the property of Seiko Epson Corporation or their respective owners.  
Product information is subject to change without prior notice.

1. - Compared to leading 1-chip DLP business and education projectors based on NPD data, July 2011 through June 2012. Colour Brightness (Colour Light Output) measured in accordance with IDMS 15.4. Colour Brightness will vary depending on usage conditions. For more information please visit [www.epson.eu/CLO](http://www.epson.eu/CLO)
2. - iProjection App available on Android and iOS devices

**EPSON**<sup>®</sup>