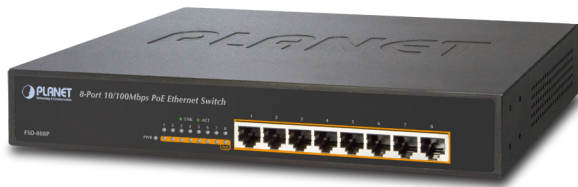
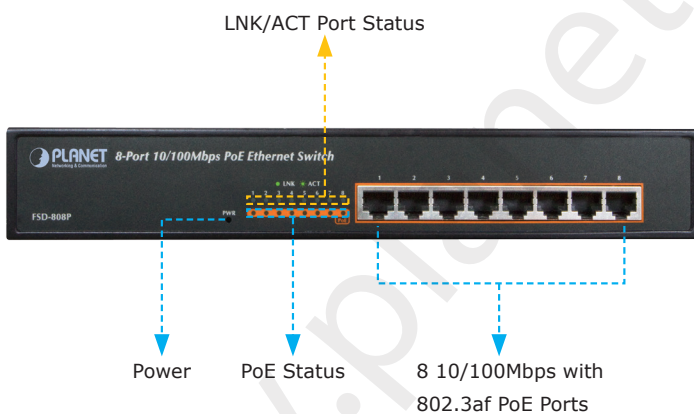


8-Port 10/100Mbps PoE Fast Ethernet Switch



Centralized Power Distribution for Ethernet Networking

PLANET's FSD-808P is an 8-Port 10/100Mbps 802.3af PoE Switch that fulfills the demand of sufficient PoE power for Fast Ethernet network applications. The FSD-808P has a PoE power budget of 125-watts and features 8 802.3af PoE ports that can power 8 IEEE 802.3af compliant powered devices. The FSD-808P also features a simple, cost-effective, and non-blocking wire-speed performance with a 12-inch metal enclosure for desktop deployment in compact housing, a SOHO office or a department network.



Easy Network Infrastructure by PoE Function

With 8 IEEE 802.3af PoE port interfaces, the FSD-808P is ideal for small businesses and workgroups seeking to deploy PoE applications such as wireless access points, IP-based surveillance cameras or IP phones at any location. The IEEE 802.3af standard enables the FSD-808P to power 8 PoE compliant devices at distances of up to 100 meters via its 4-pair Cat 5/5e UTP wire. With data and power delivered via the Ethernet connection, the FSD-808P can reduce the need for extension cords and electrical outlets that are hard to reach or absent. The device simplifies installation and reduces installation costs.

RJ-45 Interface

- 8-Port 10/100Mbps Fast Ethernet ports
- 8-Port supports 48V DC power to PoE Powered Device

Power over Ethernet

- Complies with IEEE 802.3af Power over Ethernet Mid-Span PSE
- Up to 8 IEEE 802.3af devices powered
- Supports PoE Power up to 15.4 watts for each PoE port
- Auto detects powered device (PD)
- Circuit protection prevents power interference between ports
- Remote power feeding up to 100m

Switching

- Hardware based 10/100Mbps Auto-Negotiation and Auto MDI/MDI-X
- Flow control for Full Duplex operation and back pressure for Half Duplex operation
- Integrates address look-up engine, supporting 2K absolute MAC addresses
- Automatic address learning and address aging

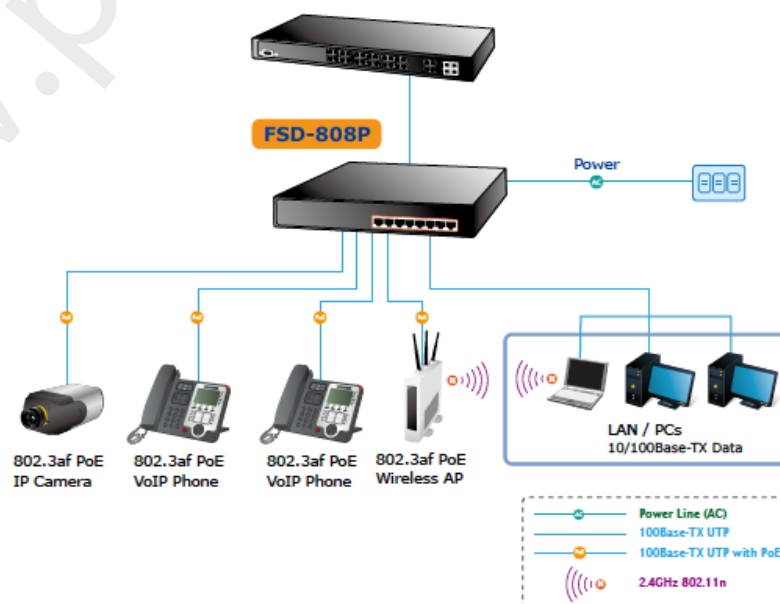
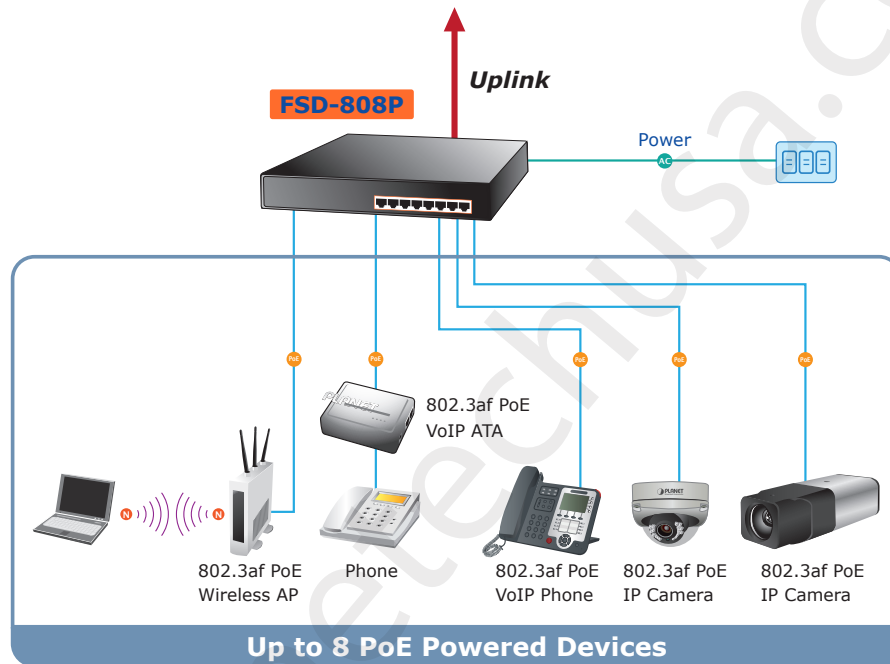
Hardware

- 12-inch desktop size, 1U height
- LED indicators for PoE ready and PoE activity
- 1 silent fan to provide stable and efficient power performance

Application

Department / Workgroup PoE Switch

With 8 PoE port interfaces, the FSD-808P can easily be used to build a powerful centrally-controlled IP phone system, IP Camera system or wireless AP group for an enterprise. For example, up to 8 PoE IP cameras can be installed in a company for surveillance purposes or 8 PoE Wireless APs can be used to build a wireless roaming environment in an office. Without the limitations of requiring additional power outlet sources, the Switch simplifies the installation of cameras or Wireless APs.



Specifications

Product	FSD-808P 8-Port 10/100Mbps PoE Fast Ethernet Switch	
Hardware Specifications		
Network Connector	8-Port RJ-45 for 10/100Base-TX	
PoE Inject Port	8-Port with 802.3af PoE injector function	
LED Display	System: Power (Green) Per port : PoE (Green) LNK/ACT (Green)	
Switch Architecture	Store and Forward switch architecture	
MAC Address	2K MAC address table with auto learning function	
Switch Fabric	1.6Gbps	
Switch Throughput	1.19Mpps@64Bytes	
Power Requirements	AC 100~240V, 50/60Hz, 1.5A max.	
Power Consumption	Max.135 watts / 460 BTU	
Dimensions (W x D x H)	280 x 180 x 43 mm	
Weight	1.65kg	
Power over Ethernet		
PoE Standard	IEEE 802.3af Power over Ethernet / PSE	
PoE Power Supply Type	Mid-Span	
PoE Power Output	Per Port 48V DC, 350mA . Max. 15.4 Watts	
Power Pin Assignment	4/5(-), 7/8(+)	
PoE Power Budget	125 watts	
Standard Conformance		
EMI Safety	FCC Class A, CE	
Standard Compliance	IEEE 802.3 IEEE 802.3u IEEE 802.3x IEEE 802.3af	Ethernet Fast Ethernet Flow Control Power over Ethernet
Environment		
Operating Temperature	0 ~ 50 degrees C	
Storage Temperature	-40 ~ 70 degrees C	
Operating Humidity	5 ~ 95%, relative humidity, non-condensing	
Storage Humidity	5 ~ 95%, relative humidity, non-condensing	

Ordering Information

FSD-808P	8-Port 10/100Mbps PoE Fast Ethernet Switch
----------	--

Related Products

FSD-504HP	4-Port 10/100Mbps 802.3af/at PoE + 1-Port 10/100Mbps Desktop Switch (60 Watts)
FSD-804P	8-Port 10/100Mbps with 4-Port PoE Ethernet Switch
FSD-808HP	8-Port 10/100Mbps 802.3at PoE Desktop Switch
FSD-910P	8-Port 10/100Mbps 802.3af PoE + 1-Port 10/100/1000Mbps Desktop Switch
FNSW-1600P	16-Port 10/100Mbps PoE Fast Ethernet Switch

PLANET Technology Corporation
Headquarters

11F., No.96, Minquan Rd., Xindian Dist.,
New Taipei City 231, Taiwan (R.O.C.)
Tel: 886-2-2219-9518
Email: sales@planet.com.tw
Fax: 886-2-2219-9528

Versa Technology
Authorized North
American Distributor

5224 Bell Court
Chino, California 91710
Tel: 888-229-3183
Email: sales@versatek.com
www.planetechusa.com



C-FSD-808P

PLANET reserves the right to change specifications without prior notice. All brand names and trademarks are property of their respective owners. Copyright © 2014 PLANET Technology Corp. All rights reserved.