



Make It Yours.

# MASTERLIQUID ML280 RGB TR4 Edition



## Features

### Exclusive Tech

Cooler Master controls quality and builds on decades of innovation with 100% in-house design and manufacturing.

### Designed for AMD Ryzen Threadripper

Designed and customized for AMD Socket TR4 platform which features a larger contact surface area that is specifically tailored for Threadripper processors

### Dual Dissipation

Our low-profile dual chamber pump delivers sizable performance leaps over last-gen technology.

### Complete Illumination

This all-in-one liquid cooler comes with RGB LED lighting design on the pump and fans that is certified to sync with Motherboard RGB software or controlled by our controller

### Include Wired RGB Controller & Splitter

Allows you customize colors and light effects.

EAN Code	4719512072288
UPC Code	884102037535
Net weight (Kg)	1.42
Gross weight (Kg)	2.14
Package Dimension (L x W x H)	34.9 x 25.2 x 15.2 cm
Carton Dimension (L x W x H)	62.7 x 36.7 x 28.5 cm
Unit/ Carton	4 pcs

Cont.	W/ Pallet	Carton/ Pallet	W/O Pallet
20'	1120	20'	N/A
40'	2240	40'	N/A
40 HQ	2560	40 HQ	N/A
45 HQ	2816	45 HQ	N/A

The MasterLiquid ML280 RGB TR4 Edition all-in-one liquid CPU cooler is custom, inside and out. Exclusive for AMD Ryzen TR4 socket which features a larger contact surface area that is specifically tailored for Threadripper processors. Our low-profile dual chamber pump outperforms its single chamber predecessors in heat transfer. RGB LEDs are installed on both the pump and fans for full color customization that can be controlled through the provided controller. Kink-free, factory-sealed FEP tubing now comes sleeved for a premium look. Screw it in and experience the quiet muscle of liquid cooling without ever worrying about refills or maintenance. Enjoy the work of decades of thermal innovation.

## Specifications & Packing Information

Model	MLX-D28M-A13PC-T1	
CPU Socket	AMD Socket TR4	
Radiator	Material	Aluminum
	Dimensions	318 x 137 x 27.2mm (12.5 x 5.4 x 1.1")
Fan	Dimensions	140 x 140 x 25 mm (5.5 x 5.5 x 1")
	Quantity	2 PCS
	Speed	600 ~ 1300 RPM (PWM) ± 10%
	Air Flow	79.6 CFM (Max)
	Air Pressure	1.3 mmH2O (Max)
	MTTF	160,000 hours
	Noise Level	6 ~ 30 dBA
	Connector	4-Pin (PWM)
	Rated Voltage	12 VDC
Pump	Dimensions	86 x 70 x 49 mm (3.4 x 2.8 x 1.9")
	MTTF	70,000 hours
	Noise Level	< 15 dBA
	Connector	3-Pin
	Rated Voltage	12 VDC
Warranty		2 Years
*For the latest CPU support information, please visit our website		

## Feature Description

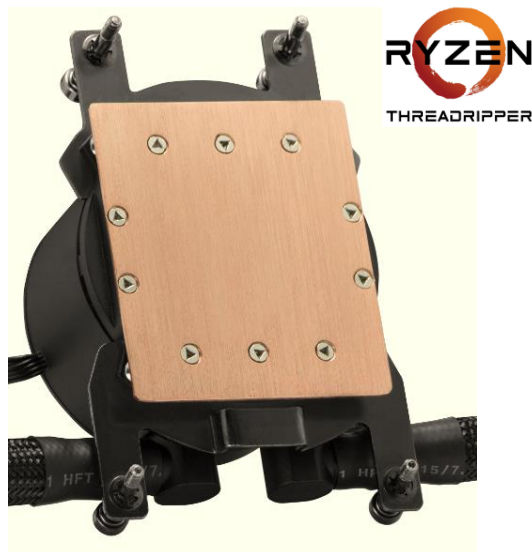
### 1-to-3 RGB SPLITTER (Bundled Accessory)

Allows you extend to multiple RGB devices



### SOCKET TR4

Designed and customized for AMD Socket TR4 platform which features a larger contact surface area that is specifically tailored for Threadripper processors



### EXCLUSIVE WIRED RGB CONTROLLER (Bundled Accessory)

Allows you customize colors even without RGB Motherboard

**BRIGHTNESS**  
Adjust the brightness

**LIGHTING EFFECT**  
6 pre-set effects to select



**COLOR**  
Adjust the color base on the effect selected

### RGB CERTIFICATIONS

Certificated compatible with RGB motherboards. RGB function to sync with the system

