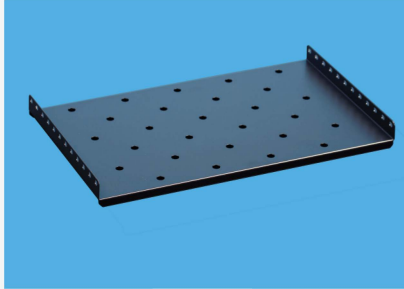
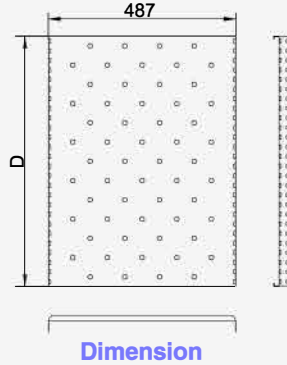


# Accessories



Fixed shelf



### Fixed shelf:

Used for placing equipment.

### Material:

- SPCC Cold rolled steel t1.2.

### Surface Finish:

- Degreasing、Vitrification、powder coated .

### Loading capacity:

- 60 KG .

### Definition of color:

SG.■■■■■. ■■■01:RAL9004

SG.■■■■■. ■■■00:RAL7035

### Specification:

Model No.	Specification	D (mm)	Use
SG. 0127. 19■■■	600Depth Cabinets Fixed shelf	275	600 Depth G line cabinet
SG. 0147. 19■■■	800Depth Cabinets Fixed shelf	475	800 Depth G line cabinet
SG. 0157. 19■■■	900Depth Cabinets Fixed shelf	575	900 Depth G line cabinet
SG. 0165. 19■■■	1000Depth Cabinets Fixed shelf	650	1000/1100/1200 Depth G line cabinet